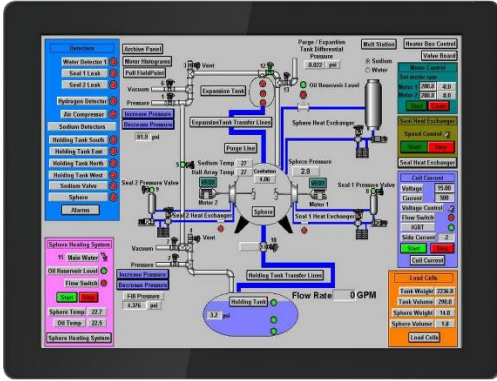


15" TEK495 F35	Intel J6412 2.0GHz
-----------------------	---------------------------



CPU Support		Intel J6412 2.0Ghz (Turbo Boost 2.6Ghz)
System Memory		8GB DDR4
Storage		128GB M.2 SSD
LCD	Size	15" TFT LED LCD Panel
	Brightness	250 cd/m2
	Resolution	1024x768
Touch Screen		True Flat P-CAP
LAN		1 x RJ-45 (10/100/1000 Mbps Giga LAN) / Wireless Optional
External I/O Port	Rear	1 x USB C / 2 x USB 3.0 / 4 x USB 2.0
		3 x Serial port RJ48
		1 x FeDP Video Output
		1 x Mic-in/Speaker-out (COMBO Jack)
		1 x DC IN
		1 x Power Switch
Speaker		1 x 3W Speaker
Mount		100mm VESA
Power		External power adapter, 60W/19V (Lock type)
EMC Safety		CE, FCC Class A
OS Support		Windows 10 / Windows 11 / Linux

